

Magnetic Resonance Imaging (MRI) - Musculoskeletal

What is MRI of the Musculoskeletal System?

Magnetic resonance imaging (MRI) is a noninvasive medical test that helps physicians diagnose and treat medical conditions.

MR imaging uses a powerful magnetic field, radio frequency pulses and a computer to produce detailed pictures of organs, soft tissues, bone and virtually all other internal body structures. The images can then be examined on a computer monitor, transmitted electronically, printed or copied to a CD. MRI does not use ionizing radiation (x-rays).



Detailed MR images allow physicians to better evaluate various parts of the body and determine the presence of certain diseases that may not be assessed adequately with other imaging methods such as x-ray, ultrasound or computed tomography (also called CT or CAT scanning).

What are some common uses of the procedure?

MR imaging is usually the best choice for examining the:

- body's major joints.
- spine for disk disease.
- soft tissues (muscles, tendons and ligaments) and bones of the extremities.

MR imaging is typically performed to diagnose or evaluate:

- degenerative joint disorders such as arthritis and meniscus tears (knee) or labral tears (shoulder and hip).
- fractures (in selected patients).
- joint abnormalities due to trauma (such as tears of ligaments and tendons).
- spinal disk abnormalities (such as a herniated disk).
- the integrity of the spinal cord after trauma.
- sports-related injuries and work-related disorders caused by repeated strain, vibration or forceful impact.
- infections (such as osteomyelitis).
- tumors (primary tumors and metastases) involving bones and joints.
- pain, swelling or bleeding in the tissues in and around the joints and extremities.
- congenital malformations of the extremities in children and infants.

- development abnormalities of the extremities in children and infants.
- congenital and idiopathic (developing during adolescence) scoliosis prior to surgery.
- tethered spinal cord (abnormal stretching in the spinal cord) in infants and children.

How should I prepare?

You may be asked to wear a gown during the exam or you may be allowed to wear your own clothing if it is loose-fitting and has no metal fasteners.

Guidelines about eating and drinking before an MRI exam vary with the specific exam and also with the facility. For some types of exams, you will be asked to fast for 8-12 hours. Unless you are told otherwise, you may follow your regular daily routine and take medications as usual.

Some MRI examinations may require the patient to swallow contrast material or receive an injection of contrast into the bloodstream. The radiologist or technologist may ask if you have allergies of any kind, such as allergy to iodine or x-ray contrast material, drugs, food, the environment, or asthma. However, the contrast material used for an MRI exam, called gadolinium, does not contain iodine and is less likely to cause side effects or an allergic reaction.

The radiologist should also know if you have any serious health problems or if you have recently had surgery. Some conditions, such as severe kidney disease may prevent you from being given contrast material for an MRI. If there is a history of kidney disease, it may be necessary to perform a blood test to determine whether the kidneys are functioning adequately.

Women should always inform their physician or technologist if there is any possibility that they are pregnant. MRI has been used for scanning patients since the 1980's with no reports of any ill effects on pregnant women or their babies. However, because the baby will be in a strong magnetic field, pregnant women should not have this exam unless the potential benefit from the MRI is assumed to outweigh the potential risks. See the Safety page (www.RadiologyInfo.org/en/safety/) for more information about pregnancy and MR imaging.

If you have claustrophobia (fear of enclosed spaces) or anxiety, you may want to ask your physician for a prescription for a mild sedative prior to the scheduled examination.

Infants and young children usually require sedation to complete an MR exam without moving. Moderate and conscious sedation can be provided at most facilities. A physician or nurse specializing in the administration of sedation to children will be available during the exam to ensure your child's safety while under the effects of sedation. You will be given special instructions how to prepare your child for the sedation.

Jewelry and other accessories should be left at home if possible, or removed prior to the MRI scan. Because they can interfere with the magnetic field of the MRI unit, metal and electronic objects are not allowed in the exam room. These items include:

- jewelry, watches, credit cards and hearing aids, all of which can be damaged.
- pins, hairpins, metal zippers and similar metallic items, which can distort MRI images.
- removable dental work.
- pens, pocketknives and eyeglasses.

- body piercings.

In most cases, an MRI exam is safe for patients with metal implants, except for a few types. People with the following implants cannot be scanned and should not enter the MRI scanning area unless explicitly instructed to do so by a radiologist or technologist who is aware of the presence of any of the following:

- internal (implanted) defibrillator or pacemaker
- cochlear (ear) implant
- some types of clips used on brain aneurysms

You should tell the technologist if you have medical or electronic devices in your body, because they may interfere with the exam or potentially pose a risk, depending on their nature and the strength of the MRI magnet. Examples include but are not limited to:

- artificial heart valves
- implanted drug infusion ports
- implanted electronic device, including a cardiac pacemaker
- artificial limbs or metallic joint prostheses
- implanted nerve stimulators
- metal pins, screws, plates, stents or surgical staples

In general, metal objects used in orthopedic surgery pose no risk during MRI. However, a recently placed artificial joint may require the use of another imaging procedure. If there is any question of their presence, an x-ray may be taken to detect the presence of and identify any metal objects.

Patients who might have metal objects in certain parts of their bodies may also require an x-ray prior to an MRI. You should notify the technologist or radiologist of any shrapnel, bullets, or other pieces of metal which may be present in your body due to accidents. Dyes used in tattoos may contain iron and could heat up during MRI, but this is rarely a problem. Tooth fillings and braces usually are not affected by the magnetic field but they may distort images of the facial area or brain, so the radiologist should be aware of them.

Parents who accompany children into the scanning room also need to remove metal objects and notify the technologist of any medical or electronic devices they may have.

What does the equipment look like?

The traditional MRI unit is a large cylinder-shaped tube surrounded by a circular magnet. You will lie on a moveable examination table that slides into the center of the magnet.



Some MRI units, called short-bore systems, are designed so that the magnet does not completely surround you; others are open on the sides (open MRI). These units are especially helpful for examining patients who are fearful of being in a closed space and for those who are very obese. Newer open MRI units provide very high quality images for many types of exams; however, open MRI units with older magnets may not provide this same quality. Certain types of exams cannot be performed using open MRI. For more information, consult your doctor.

The computer workstation that processes the imaging information is located in a separate room than the scanner.

How does the procedure work?

Unlike conventional x-ray examinations and computed tomography (CT) scans, MRI does not depend on ionizing radiation. Instead, while in the magnet, radio waves redirect the axes of spinning protons, which are the nuclei of hydrogen atoms, in a strong magnetic field.

The magnetic field is produced by passing an electric current through wire coils in most MRI units. Other coils, located in the machine and in some cases, placed around the part of the body being imaged, send and receive radio waves, producing signals that are detected by the coils.

A computer then processes the signals and generates a series of images each of which shows a thin slice of the body. The images can then be studied from different angles by the interpreting physician.

Overall, the differentiation of abnormal (diseased) tissue from normal tissues is often better with MRI than with other imaging modalities such as x-ray, CT and ultrasound.

How is the procedure performed?

MRI examinations may be performed on outpatients or inpatients.

You will be positioned on the moveable examination table. Straps and bolsters may be used to help you stay still and maintain the correct position during imaging.

Small devices that contain coils capable of sending and receiving radio waves may be placed around or adjacent to the area of the body being studied.

If a contrast material will be used in the MRI exam, a nurse or technologist will insert an intravenous (IV) line into a vein in your hand or arm. A saline solution may be used. The solution will drip through the IV to prevent blockage of the IV line until the contrast material is injected.

You will be moved into the magnet of the MRI unit and the radiologist and technologist will leave the room while the MRI examination is performed.

If a contrast material is used during the examination, it will be injected into the intravenous line (IV) after an initial series of scans. Additional series of images will be taken during or following the injection.

When the examination is completed, you may be asked to wait until the technologist or radiologist checks the images in case additional images are needed.

Your intravenous line will be removed.

MRI exams generally include multiple runs (sequences), some of which may last several minutes.

The entire examination is usually completed within 30 to 45 minutes.

If your child requires sedation to complete the MRI, you may be asked to come early for the exam in

order for your child to be evaluated prior to sedation. Sedation may add 15 – 30 minutes to the procedure. Your child may need to stay additional time to be monitored as the sedation wears off.

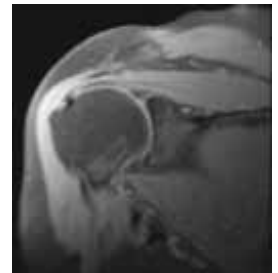
In selected patients, conventional arthrography will be performed first. During that procedure contrast material may be injected into the joint of concern (typically in the shoulder, hip or wrist) before MRI in order to image the joint structures in more detail. See the Conventional Arthrography page (www.RadiologyInfo.org/en/info.cfm?pg=arthrog for more information.

MR spectroscopy, which provides additional information on the chemicals present in the body's cells, may also be performed during the MRI exam and may add approximately 15 minutes to the exam time.

What will I experience during and after the procedure?

Most MRI exams are painless, however, some patients find it uncomfortable to remain still during MR imaging. Others experience a sense of being closed-in (claustrophobia). Therefore, sedation can be arranged for those patients who anticipate anxiety, but fewer than one in 20 require it.

It is normal for the area of your body being imaged to feel slightly warm, but if it bothers you, notify the radiologist or technologist. It is important that you remain perfectly still while the images are being recorded, which is typically only a few seconds to a few minutes at a time. For some types of exams, you may be asked to hold your breath. You will know when images are being recorded because you will hear tapping or thumping sounds when the coils that generate the radiofrequency pulses are activated. You will be able to relax between imaging sequences, but will be asked to maintain your position as much as possible.



You will usually be alone in the exam room during the MRI procedure. However, the technologist will be able to see, hear and speak with you at all times using a two-way intercom. Many MRI centers allow a friend or parent to stay in the room as long as they are also screened for safety in the magnetic environment.

You may be offered or you may request earplugs to reduce the noise of the MRI scanner, which produces loud thumping and humming noises during imaging. Children will be given appropriately sized earplugs or headphones during the exam. MRI scanners are air-conditioned and well-lit. Some scanners have music to help you pass the time.

When the contrast material is injected, it is normal to feel coolness and a flushing sensation for a minute or two. The intravenous needle may cause you some discomfort when it is inserted and once it is removed, you may experience some bruising. There is also a very small chance of irritation of your skin at the site of the IV tube insertion.

If you have not been sedated, no recovery period is necessary. You may resume your usual activities and normal diet immediately after the exam. A few patients experience side effects from the contrast material, including nausea and local pain. Very rarely, patients are allergic to the contrast material and experience hives, itchy eyes or other reactions. If you experience allergic symptoms, a radiologist or other physician will be available for immediate assistance.

Manufacturers of intravenous contrast indicate mothers should not breast feed their babies for 24-48 hours after contrast medium is given. However, both the American College of Radiology (ACR) and the

European Society of Urogenital Radiology note that the available data suggest that it is safe to continue breast-feeding after receiving intravenous contrast. The Manual on Contrast Media from the ACR states:

"Review of the literature shows no evidence to suggest that oral ingestion by an infant of the tiny amount of gadolinium contrast medium excreted into breast milk would cause toxic effects. We believe, therefore, that the available data suggest that it is safe for the mother and infant to continue breast-feeding after receiving such an agent.

If the mother remains concerned about any potential ill effects, she should be given the opportunity to make an informed decision as to whether to continue or temporarily abstain from breast-feeding after receiving a gadolinium contrast medium. If the mother so desires, she may abstain from breast-feeding for 24 hours with active expression and discarding of breast milk from both breasts during that period. In anticipation of this, she may wish to use a breast pump to obtain milk before the contrast study to feed the infant during the 24-hour period following the examination."

For further information please consult the ACR Manual on Contrast Media, Version 6, 2008, and its references. You may find it on the ACR Website (<http://www.acr.org/contrast-manual>).

Who interprets the results and how do I get them?

A radiologist, a physician specifically trained to supervise and interpret radiology examinations, will analyze the images and send a signed report to your primary care or referring physician, who will share the results with you.

What are the benefits vs. risks?

Benefits

- MRI is an imaging technique that does not require exposure to radiation.
- MR images of the soft-tissue structures of the body (particularly muscles, bones and joints) are clearer and more detailed than with other imaging methods. This detail makes MRI an invaluable tool in early diagnosis and evaluation of many conditions, including tumors.
- MRI can distinguish abnormal tissues from normal tissues much more accurately than other imaging tests (x-ray, CT, etc).
- MRI enables the discovery of abnormalities that might be obscured by bone with other imaging methods.
- The contrast material used in MRI exams is less likely to produce an allergic reaction than the iodine-based contrast materials used for conventional x-rays and CT scanning.
- MR images allow the physician to clearly see even very small tears and injuries to tendons, ligaments and muscles and some fractures that cannot be seen on x-rays.

Risks

- The MRI examination poses almost no risk to the average patient when appropriate safety guidelines are followed.
- If sedation is used there are risks of excessive sedation. The technologist or nurse monitors your vital signs to minimize this risk.
- Although the strong magnetic field is not harmful in itself, implanted medical devices that contain metal may malfunction or cause problems during an MRI exam.
- There is a very slight risk of an allergic reaction if contrast material is injected. Such reactions usually are mild and easily controlled by medication. If you experience allergic symptoms, a radiologist or other physician will be available for immediate assistance.
- Nephrogenic systemic fibrosis is currently a recognized, but rare, complication of MRI believed to be caused by the injection of high doses of MRI contrast material in patients with very poor kidney function.
- If contrast material is injected into the joint, there may be related complications such as infection, bleeding or pain.

What are the limitations of a Musculoskeletal MRI?

High-quality images are assured only if you are able to remain perfectly still or hold your breath, if requested to do so, while the images are being recorded. If you are anxious, confused or in severe pain, you may find it difficult to lie still during imaging.

A person who is very large may not fit into the opening of a conventional MRI machine.

The presence of an implant or other metallic object sometimes makes it difficult to obtain clear images and patient movement can have the same effect.

MRI generally is not recommended for patients who have been acutely injured; however, this is a clinical judgment. This is because traction devices and many types of life support equipment must be kept away from the area to be imaged. Furthermore, the examination takes longer than other imaging modalities (typically x-ray and CT) and the results may not be immediately available as is often necessary in trauma situations.

Although there is no reason to believe that magnetic resonance imaging harms the fetus, pregnant women usually are advised not to have an MRI exam unless medically necessary.

MRI may not always distinguish between cancer tissue and edema fluid.

MRI typically costs more and may take more time to perform than other imaging modalities.

Because of the length of time an MRI takes to complete, many young children and infants require sedation to hold still for the exam.

Initial assessment of bones and joints is typically performed with x-rays.

Disclaimer

This information is copied from the RadiologyInfo Web site (<http://www.radiologyinfo.org>) which is dedicated to providing the highest quality information. To ensure that, each section is reviewed by a physician with expertise in the area presented.

All information contained in the Web site is further reviewed by an ACR (American College of Radiology) - RSNA (Radiological Society of North America) committee, comprising physicians with expertise in several radiologic areas.

However, it is not possible to assure that this Web site contains complete, up-to-date information on any particular subject. Therefore, ACR and RSNA make no representations or warranties about the suitability of this information for use for any particular purpose. All information is provided "as is" without express or implied warranty.

Please visit the RadiologyInfo Web site at <http://www.radiologyinfo.org> to view or download the latest information.

Note: Images may be shown for illustrative purposes. Do not attempt to draw conclusions or make diagnoses by comparing these images to other medical images, particularly your own. Only qualified physicians should interpret images; the radiologist is the physician expert trained in medical imaging.

Copyright

This material is copyrighted by either the Radiological Society of North America (RSNA), 820 Jorie Boulevard, Oak Brook, IL 60523-2251 or the American College of Radiology (ACR), 1891 Preston White Drive, Reston, VA 20191-4397. Commercial reproduction or multiple distribution by any traditional or electronically based reproduction/publication method is prohibited.

Copyright © 2010 Radiological Society of North America, Inc.